

MPP Tonnage F240



Certified
according to key
industry standards



Financial Stability
thanks to solid
family enterprise



Crane Capacity
240 MT

General information

Flag/home port

Antigua and Barbuda/St. John's

Type Multi Purpose Heavy Lift Dry Cargo Vessel, strengthened for heavy cargo, TD in all holds

IMO Fitted for all classes

Classification

General cargo ship -heavycargo (inner bottom 156,96 kN/m²)

-equipped for carriage of containers

Unrestricted navigation

AUT-UMS, BWE, ICE CLASS IA,

INWATERSURVEY

Tonnage

DWAT 12,782 MT

GT/NT 9,611/4,260

Capacity (bale space)

Cubic meters 15,952 m³

Cubic feet 563,340 cbft

Dimensions

LOA 138.07 m

LPP 130.00 m

Beam 21.00 m

Depth 11.00 m

Draft 8.00 m

Engine

Main engine MAK 6M43,

MCR: 5,400 kW at 500 rpm

Aux. engine 3x 400/230 Volt at 50 Hz

Diesel generator 395 kW

Emerg. generator 99 kW

Shaft generator 750 kW

Bow thruster 500 kW

Tank capacity

Fuel IFO 948 m³

Fuel MDO 150 m³

Freshwater 141 m³

Ballast 5,000 m³

Hatches/holds

Hold 1 18.75 x 15.02 m aft to 10.06 m fwd

TD position (5.40 m)

2 hydraulic folding covers opening fwd

Hold 2 42.00 x 17.50 m

TD positions (3.25/6.00/7.40 m)

2 hydraulic folding covers opening fwd

4 hydraulic folding covers opening aft

(splittable hatchcovers)

Hold 3 25.50 x 17.50 m

TD position (5.59 m)

4 hydraulic multifolding covers opening aft

Gear

Crane type

2 NMF cranes of 120 MT SWL each, located

port side, combinable to 240 MT SWL

Outreach SWL

120 MT/16 m; 95 MT/19 m;

75 MT/24 m; 55 MT/33 m

Permissible loads

Tanktop 16 t/m²

Tweendeck hold 4 t/m²

Hatchcovers 1.75 t/m²

Containers

Total 665 TEU

On deck 331 TEU

Under deck 334 TEU

Basis 14 MT 534 TEU

Remarks

Great Lakes fitted, AMSA fitted,

all cargo holds CO₂ fitted;

Hold 1: Sprinkler system

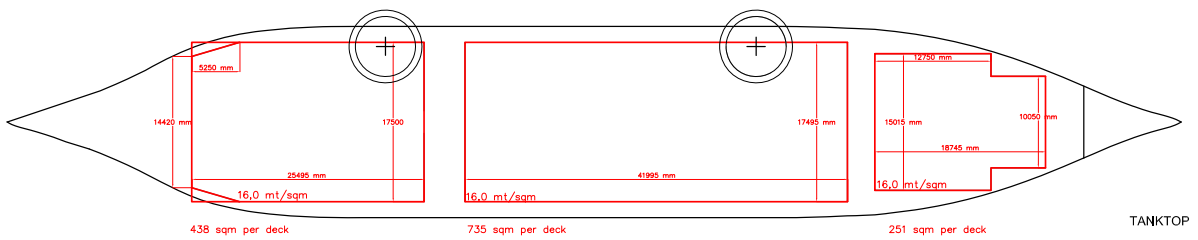
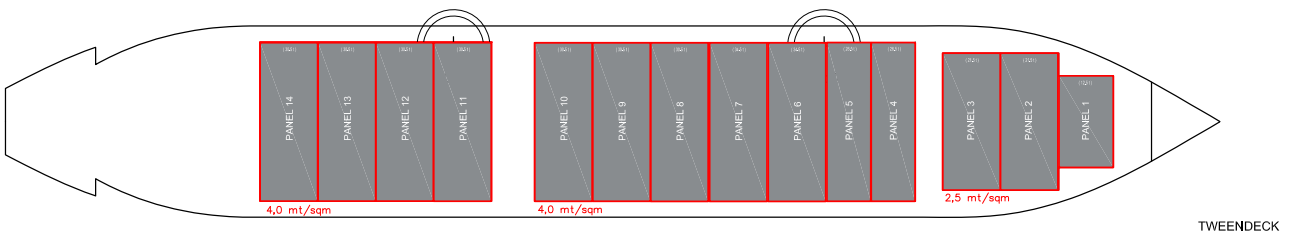
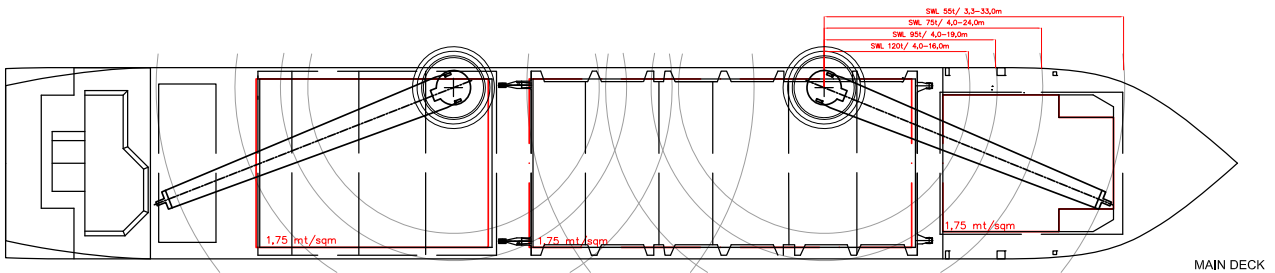
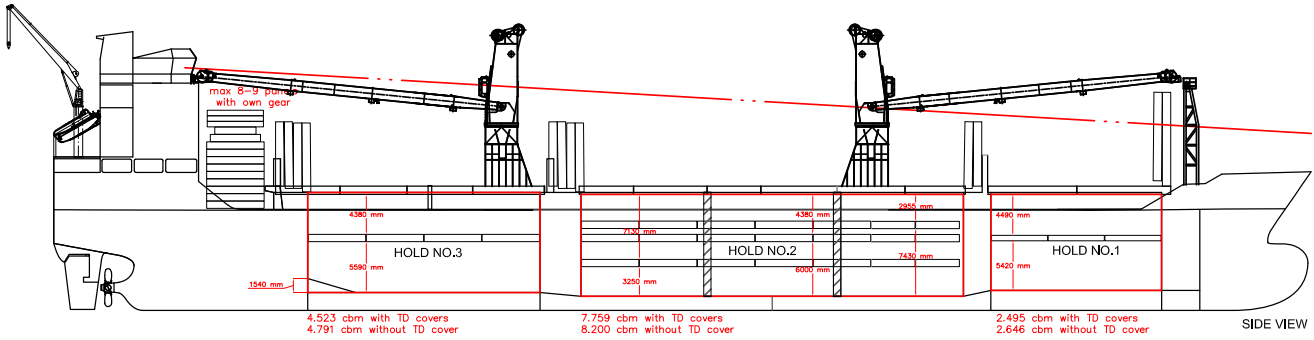
Hold 2 and 3: 12 air changes per hour



Our F240 Vessels

- MV Kylie
- MV Melissa

MPP Tonnage F240



For more information visit dship-carriers.com

All details given in good faith but without guarantee. Not to be used with charterparties without written authority.