

# MPP Tonnage F300



**Certified**  
according to key  
industry standards



**Financial Stability**  
thanks to solid  
family enterprise



**Crane Capacity**  
300 MT

## General information

**Flag/home port** Liberia  
**Type** multi purpose dry cargo ship  
strengthened for heavy cargo  
equipped for the carriage of containers  
**IMO** Fitted for all classes

## Classification

GL+100 A5 E3 G IW DBC SOLAS-II-2,  
REG.19 G IW, +MC E3 AUT

## Tonnage

**DWAT** 12,652 MT  
**GT/NT** 9,611/4,260

## Capacity (bale space)

**Cubic meters** 15,952 m<sup>3</sup>  
**Cubic feet** 563,340 cbft

## Dimensions

**LOA** 138.07 m  
**LPP** 130.00 m  
**Beam** 21.00 m  
**Depth** 11.00 m  
**Draft** 8.00 m

## Engine

**Main engine** MAK 6M43,  
MCR: 5,400 kW at 500 rpm  
**Aux. engine** 3x 395kW/230 Volt at 50 Hz  
**Diesel generator** 395 kW  
**Emerg. generator** 99 kW  
**Shaft generator** 700 kW  
**Bow thruster** 500 kW

## Tank capacity

**Fuel IFO** 871 m<sup>3</sup>  
**Fuel MDO** 260 m<sup>3</sup>  
**Freshwater** 128 m<sup>3</sup>  
**Ballast** 5,004 m<sup>3</sup>

## Hatches/holds

**Hold 1** 18.75 x 15.02 m aft to 10.06 m fwd  
TD position (5.40 m)  
2 hydraulic folding covers opening fwd  
**Hold 2** 42.00 x 17.50 m  
TD positions (3.25/6.00/7.40 m)  
2 hydraulic folding covers opening fwd  
4 hydraulic folding covers opening aft  
(splittable hatchcovers)  
**Hold 3** 25.50 x 17.50 m  
TD position (5.59 m)  
4 hydraulic multifolding covers opening aft

## Gear

**Crane type**  
2 NMF cranes of 150 MT SWL each, located  
port side, combinable to 300 MT SWL  
**Outreach SWL**  
150 MT/16 m; 120 MT/19 m;  
95 MT/24 m; 70 MT/33 m

## Permissible loads

**Tanktop** 16 t/m<sup>2</sup>  
**Tweendeck hold** 4 t/m<sup>2</sup>  
**Hatchcovers** 1.75 t/m<sup>2</sup>

## Containers

**Total** 665 TEU  
**On deck** 331 TEU  
**Under deck** 334 TEU  
**Basis 14 MT** 334 TEU

## Remarks

Great Lakes fitted, AMSA fitted,  
all cargo holds CO2 fitted;  
Hold 1: Sprinkler system  
Hold 2 and 3: 12 air changes per hour

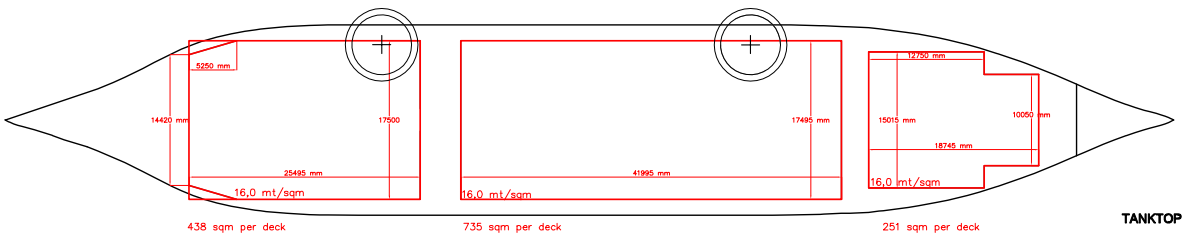
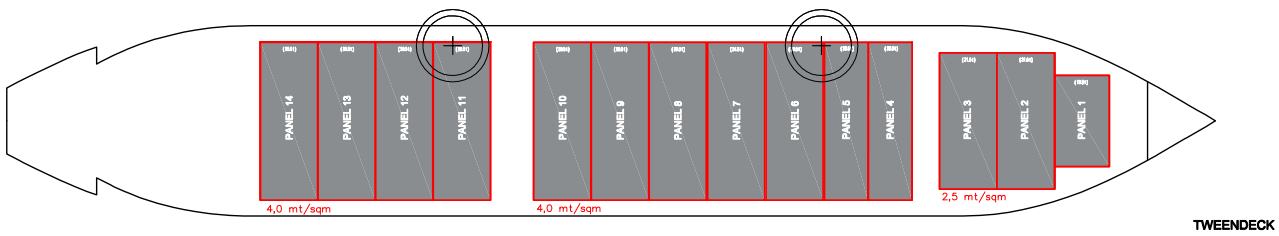
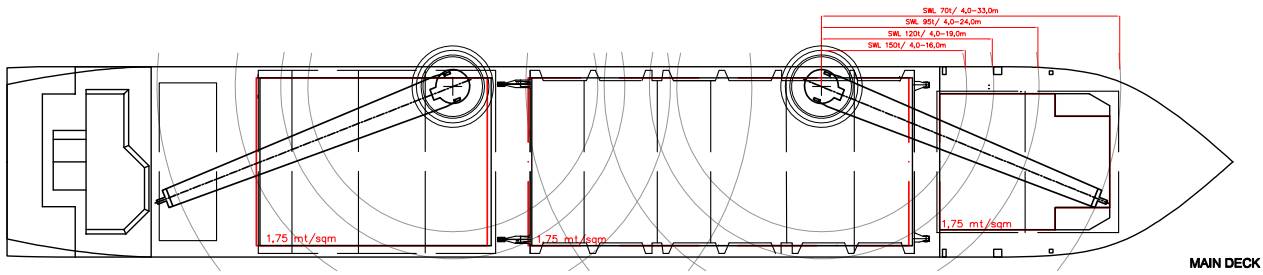
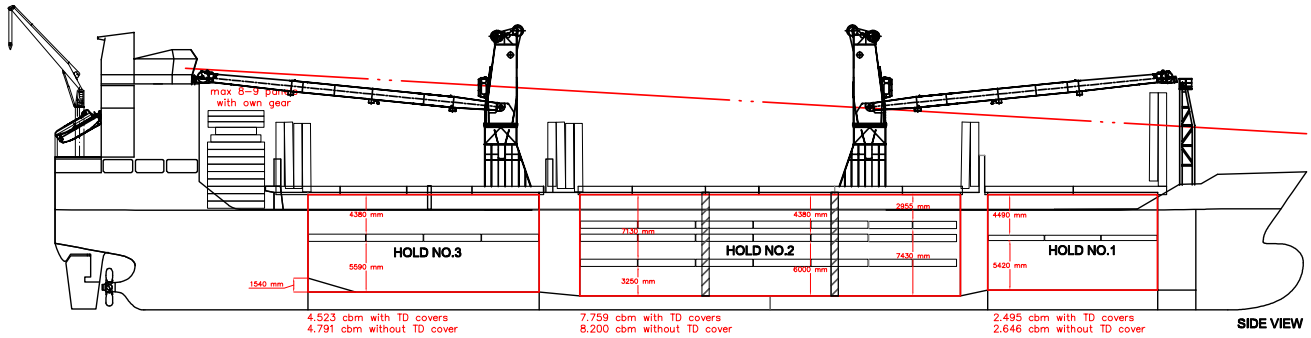


dship Carriers operates a growing  
network of offices to swiftly and  
effectively address today's demands.

### Our F300 Vessels

- MV Louise Auerbach

# MPP Tonnage F300



For more information visit [dship-carriers.com](http://dship-carriers.com)

All details given in good faith but without guarantee. Not to be used with charterparties without written authority.