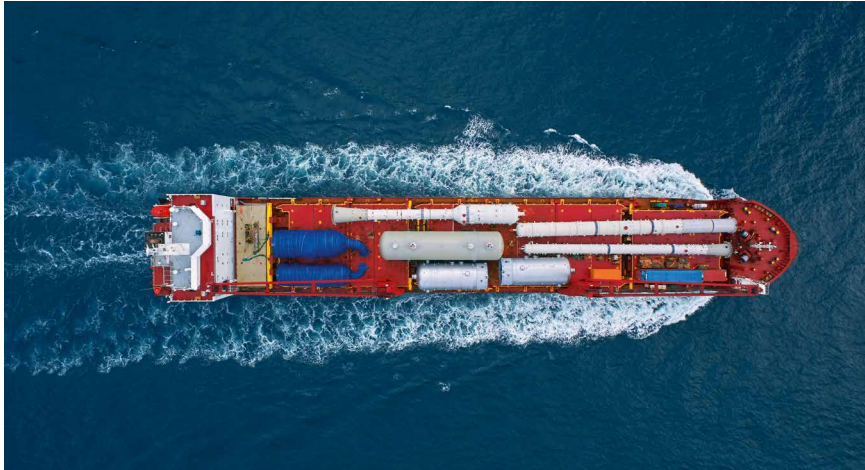


# MPP Tonnage F240



**Certified**  
according to key  
industry standards



**Financial Stability**  
thanks to solid  
family enterprise



**Crane Capacity**  
240 MT

## General information

### Flag/home port

Antigua and Barbuda/St. John's

**Type** Multi Purpose Heavy Lift Dry Cargo Vessel, strengthened for heavy cargo, TD in all holds

**IMO** Fitted for all classes

## Classification

General cargo ship -heavycargo (inner bottom 156,96 kN/m<sup>2</sup>)

-equipped for carriage of containers

Unrestricted navigation

AUT-UMS, BWE, ICE CLASS IA,

INWATERSURVEY

## Tonnage

**DWAT** 12,782 MT

**GT/NT** 9,611/4,260

## Capacity (bale space)

**Cubic meters** 15,952 m<sup>3</sup>

**Cubic feet** 563,340 cbft

## Dimensions

**LOA** 138.07 m

**LPP** 130.00 m

**Beam** 21.00 m

**Depth** 11.00 m

**Draft** 8.00 m

## Engine

**Main engine** MAK 6M43,

MCR: 5,400 kW at 500 rpm

**Aux. engine** 3x 400/230 Volt at 50 Hz

**Diesel generator** 395 kW

**Emerg. generator** 99 kW

**Shaft generator** 750 kW

**Bow thruster** 500 kW

## Tank capacity

**Fuel IFO** 948 m<sup>3</sup>

**Fuel MDO** 150 m<sup>3</sup>

**Freshwater** 141 m<sup>3</sup>

**Ballast** 5,000 m<sup>3</sup>

## Hatches/holds

**Hold 1** 18.75 x 15.02 m aft to 10.06 m fwd

TD position (5.40 m)

2 hydraulic folding covers opening fwd

**Hold 2** 42.00 x 17.50 m

TD positions (3.25/6.00/7.40 m)

2 hydraulic folding covers opening fwd

4 hydraulic folding covers opening aft

(splittable hatchcovers)

**Hold 3** 25.50 x 17.50 m

TD position (5.59 m)

4 hydraulic multifolding covers opening aft

## Gear

### Crane type

2 NMF cranes of 120 MT SWL each, located

port side, combinable to 240 MT SWL

### Outreach SWL

120 MT/16 m; 95 MT/19 m;

75 MT/24 m; 55 MT/33 m

## Permissible loads

**Tanktop** 16 t/m<sup>2</sup>

**Tweendeck hold** 4 t/m<sup>2</sup>

**Hatchcovers** 1.75 t/m<sup>2</sup>

## Containers

**Total** 665 TEU

**On deck** 331 TEU

**Under deck** 334 TEU

**Basis 14 MT** 534 TEU

## Remarks

Great Lakes fitted, AMSA fitted,  
all cargo holds CO2 fitted;

Hold 1: Sprinkler system

Hold 2 and 3: 12 air changes per hour

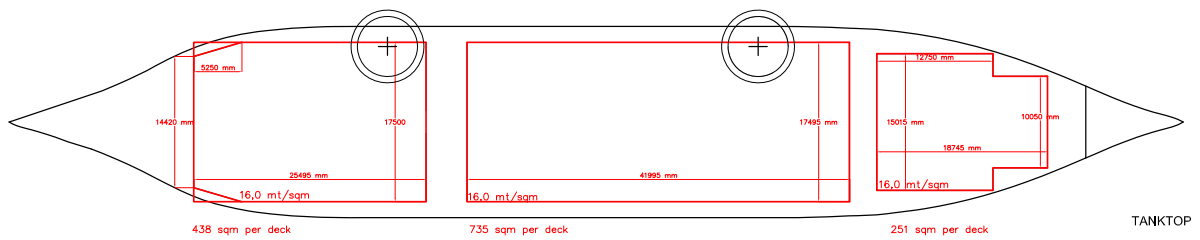
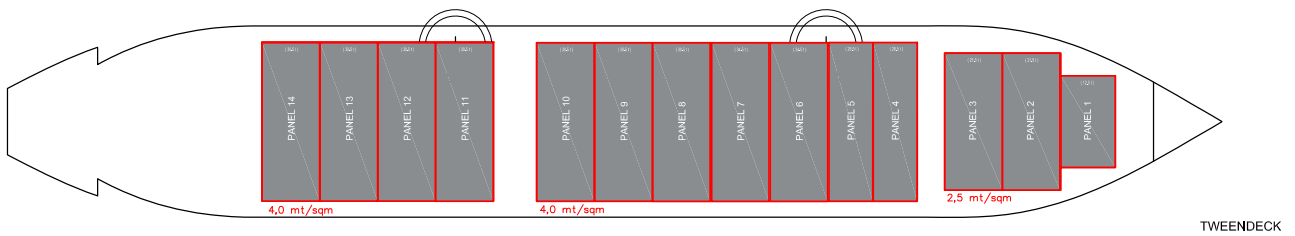
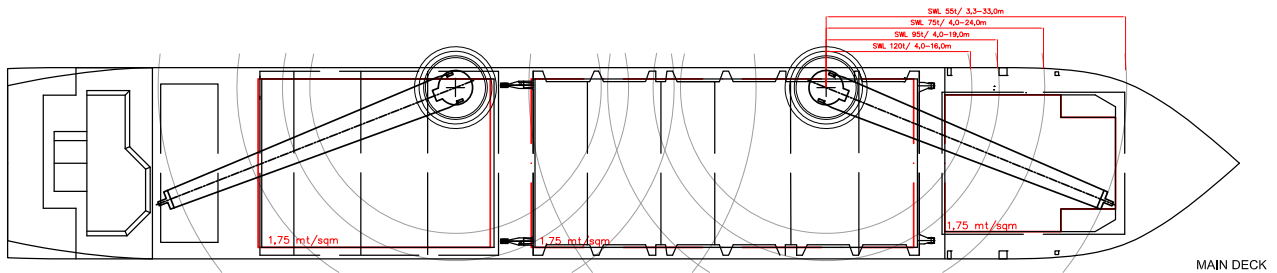
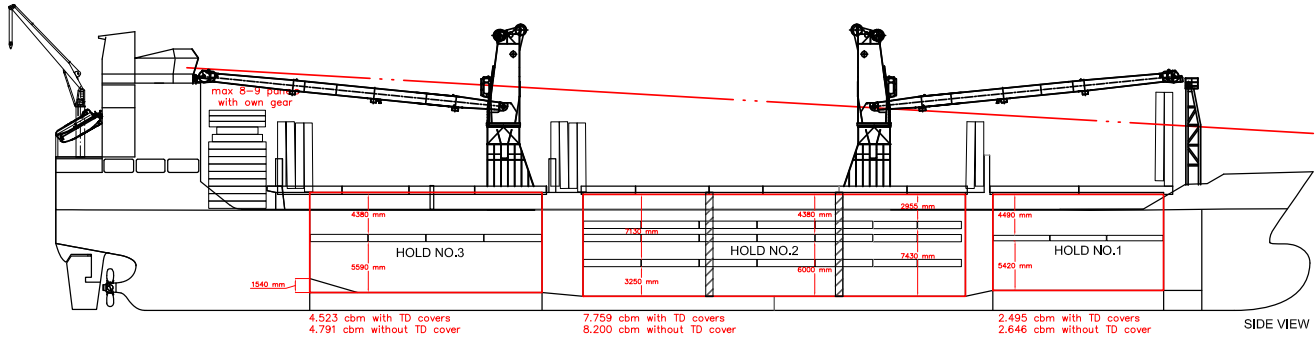


dship Carriers operates a growing network of offices to swiftly and effectively address today's demands.

### Our F240 Vessels

- MV Gallia
- MV Helvetia
- MV Holanda

# MPP Tonnage F240



For more information visit [dship-carriers.com](http://dship-carriers.com)

All details given in good faith but without guarantee. Not to be used with charterparties without written authority.