

MPP Tonnage F360



Certified
according to key
industry standards



Financial Stability
thanks to solid
family enterprise



Crane Capacity
360 MT

General information

Flag/home port Liberia
Type Multi Purpose Heavy Lift Dry Cargo Vessel, strengthened for heavy cargo, TD in all holds
IMO Fitted for all classes

Classification

100 A5 E3 Multi-purpose dry cargo ship BWM
Equipped for carriage of containers DBC
SOLAS-II-2, Reg.19 ERS G IW Strengthened for heavy cargo
MC E3 Aut

Tonnage

DWAT 12,591 MT
GT/NT 9,616/4,260

Capacity (bale space)

Cubic meters 15,952 m³
Cubic feet 563,340 cbft

Dimensions

LOA 138.07 m
LPP 130.00 m
Beam 21.00 m
Depth 11.00 m
Draft 8.00 m

Engine

Main engine MAK 6M43,
MCR: 5,400 kW at 500 rpm
Aux. engine 3x 400/230 Volt at 50 Hz
Diesel generator 395 kW
Emerg. generator 99 kW
Shaft generator 750 kW
Bow thruster 500 kW

Tank capacity

Fuel IFO 848 m³
Fuel MDO 250 m³
Freshwater 129 m³
Ballast 5,000 m³

Hatches/holds

Hold 1 18.75 x 15.02 m aft to 10.06 m fwd
TD position (5.40 m)
2 hydraulic folding covers opening fwd
Hold 2 42.00 x 17.50 m
TD positions (3.25/6.00/7.40 m)
2 hydraulic folding covers opening fwd
4 hydraulic folding covers opening aft
(splittable hatchcovers)
Hold 3 25.50 x 17.50 m
TD position (5.59 m)
4 hydraulic multifolding covers opening aft

Gear

Crane type
2 NMF cranes of 180 MT SWL each, located port side, combinable to 360 MT SWL
Outreach SWL
180 MT/13 m; 150 MT/16 m;
120 MT/19 m; 95 MT/24 m;
70 MT/33 m

Permissible loads

Tanktop 16 t/m²
Tweendeck hold 4 t/m²
Hatchcovers 1.75 t/m²

Containers

Total 665 TEU
On deck 331 TEU
Under deck 334 TEU
Basis 14 MT 534 TEU

Remarks

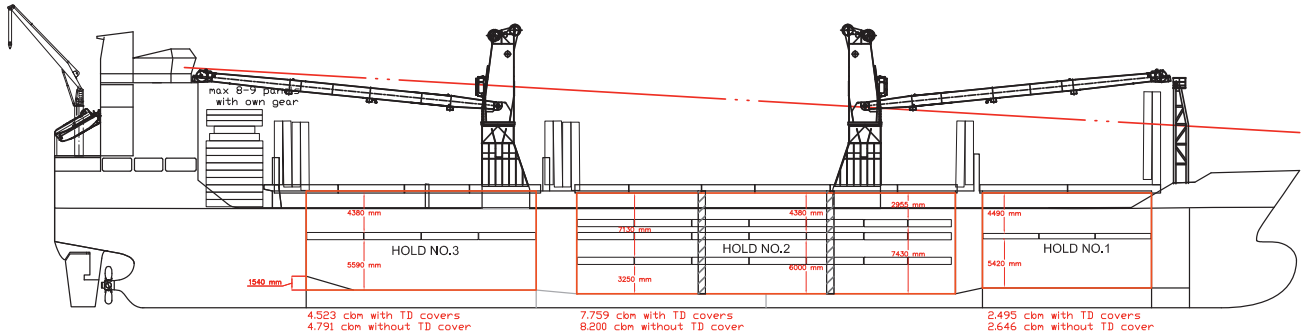
Great Lakes fitted, AMSA fitted,
all cargo holds CO2 fitted;
Hold 1: Sprinkler system
Hold 2 and 3: 12 air changes per hour



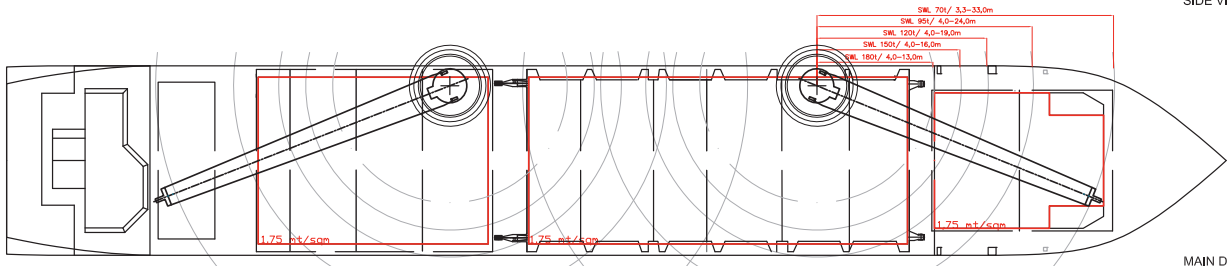
Our F360 Vessel

· *MV Olivia*

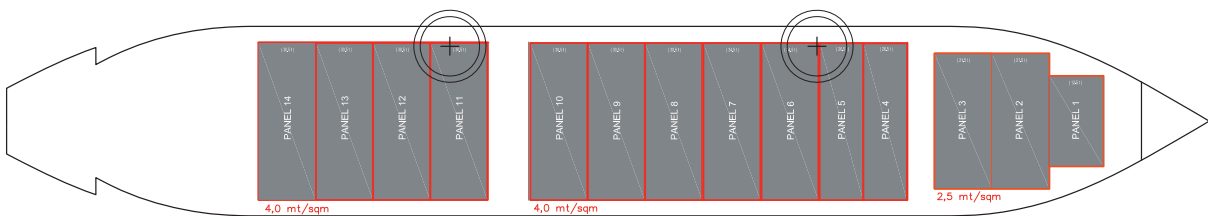
MPP Tonnage F360



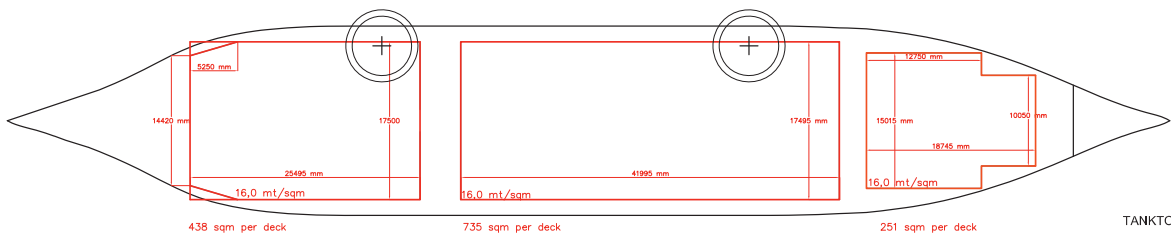
SIDE VIEW



MAIN DECK



TWEENDECK



TANKTOP

For more information visit dship-carriers.com

All details given in good faith but without guarantee. Not to be used with charterparties without written authority.