

# MPP Tonnage A300



**Certified**  
according to key  
industry standards



**Financial Stability**  
thanks to solid  
family enterprise



**Crane Capacity**  
300 MT

## General information

**Flag/home port** The Netherlands  
**Type** multi purpose dry cargo ship  
strengthened for heavy cargo  
equipped for the carriage of containers  
**IMO** Fitted for all classes

## Classification

I \* HULL \* MACH  
General cargo ship -heavycargo (147)  
Container ship Unrestricted navigation  
\* AUT-UMS

## Tonnage

**DWAT** 4,200 MT  
**GT/NT** 8,268

## Capacity (bale space)

**Cubic meters** 6,700 m<sup>3</sup>  
**Cubic feet** 239,000 cbft

## Dimensions

**LOA** 111.60 m  
**LPP** 102.00 m  
**Beam** 16.94 m  
**Depth** 9.30 m  
**Draft** 5.95 m

## Engine

**Main engine** 4,000 kW

## Tank capacity

**Fuel IFO** 358 mts  
**Fuel MDO** 75 m<sup>3</sup>  
**Freshwater** 35 m<sup>3</sup>  
**Ballast** 3,460 m<sup>3</sup>

## Holds

**Lower hold** 45.20 x 11.50 m  
**Tweendeck** 63.50 x 12.00 m  
**Hatch** 66,00 x 12,00 m

## Gear

**Crane type**  
2 NMF cranes of 150 MT SWL each, located  
starboard side, combinable to 300 MT SWL  
**Outreach SWL**  
150 MT/16 m; 120 MT/19 m;  
95 MT/24 m; 80 MT/28 m

## Permissible loads

**Tanktop** 15 t/m<sup>2</sup>  
**Tweendeck hold** 3.5 t/m<sup>2</sup>  
**Hatchcovers** 3 t/m<sup>2</sup>

## Containers

**Total** 261 TEU  
**On deck** 137 TEU  
**Under deck** 124 TEU

## Remarks

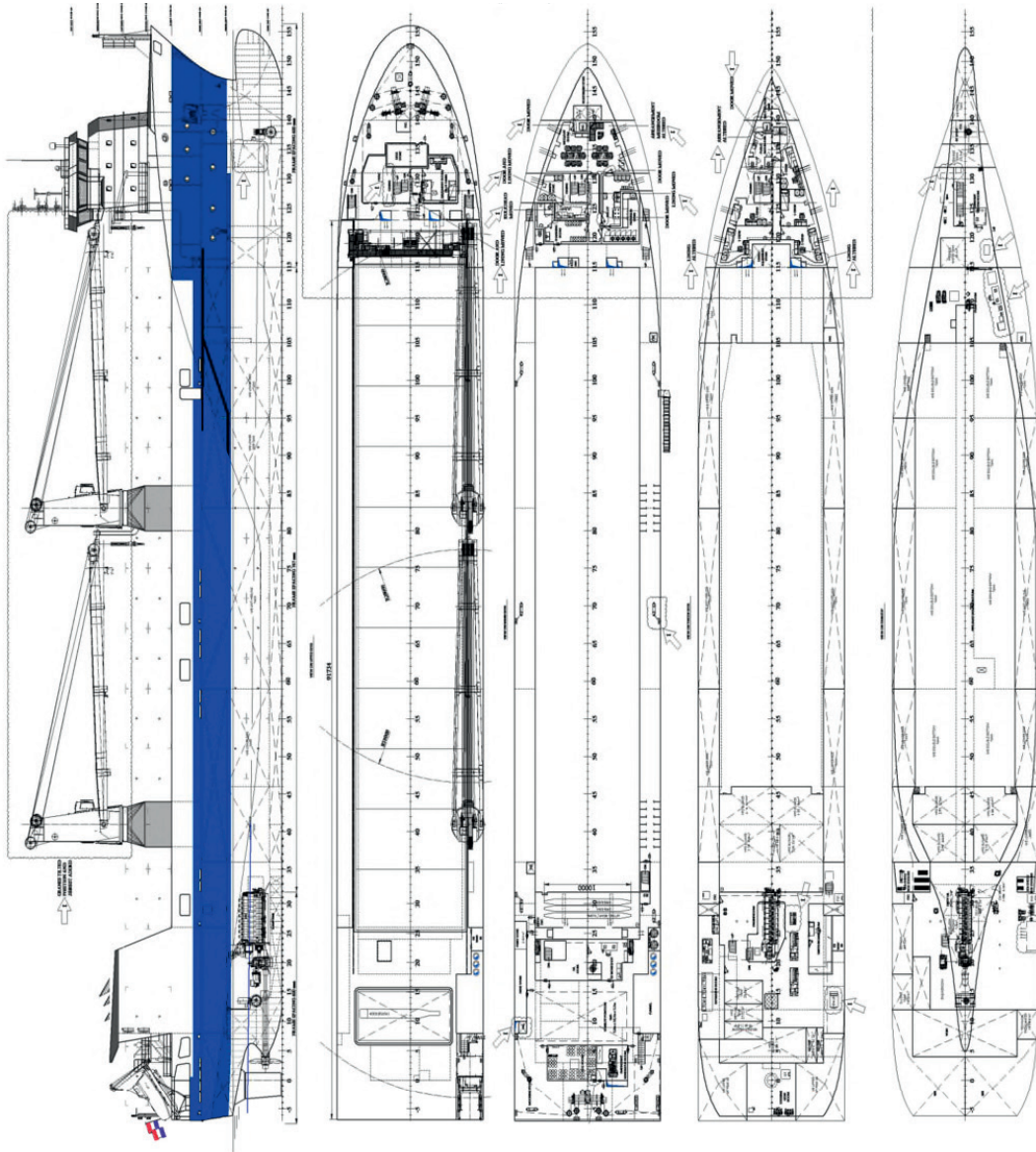
Certified for open hatch sailing



**Our A300 Vessel**

· *MV Emsliff Dafne*

# MPP Tonnage A300



For more information visit [dship-carriers.com](http://dship-carriers.com)

All details given in good faith but without guarantee. Not to be used with charterparties without written authority.