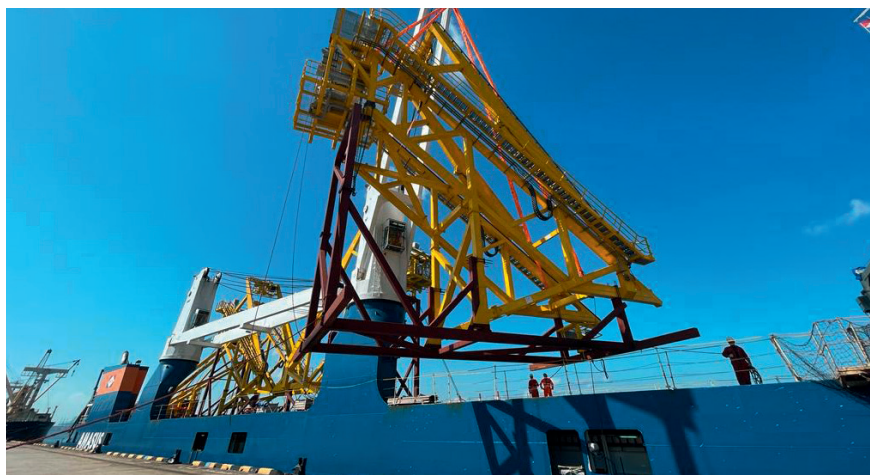


MPP Tonnage A300



Certified
according to key
industry standards



Financial Stability
thanks to solid
family enterprise



Crane Capacity
300 MT

General information

Flag/home port The Netherlands
Type multi purpose dry cargo ship
strengthened for heavy cargo
equipped for the carriage of containers
IMO Fitted for all classes

Classification

I * HULL * MACH
General cargo ship -heavycargo (147)
Container ship Unrestricted navigation
* AUT-UMS

Tonnage

DWAT 4,200 MT
GT/NT 8,268

Capacity (bale space)

Cubic meters 6,700 m³
Cubic feet 239,000 cbft

Dimensions

LOA 111.60 m
LPP 102.00 m
Beam 16.94 m
Depth 9.30 m
Draft 5.95 m

Engine

Main engine 4,000 kW

Tank capacity

Fuel IFO 358 mts
Fuel MDO 75 m³
Freshwater 35 m³
Ballast 3,460 m³

Holds

Lower hold 45.20 x 11.50 m
Tweendeck 63.50 x 12.00 m
Hatch 66,00 x 12,00 m

Gear

Crane type
2 NMF cranes of 150 MT SWL each, located
starboard side, combinable to 300 MT SWL
Outreach SWL
150 MT/16 m; 120 MT/19 m;
95 MT/24 m; 80 MT/28 m

Permissible loads

Tanktop 15 t/m²
Tweendeck hold 3.5 t/m²
Hatchcovers 3 t/m²

Containers

Total 261 TEU
On deck 137 TEU
Under deck 124 TEU

Remarks

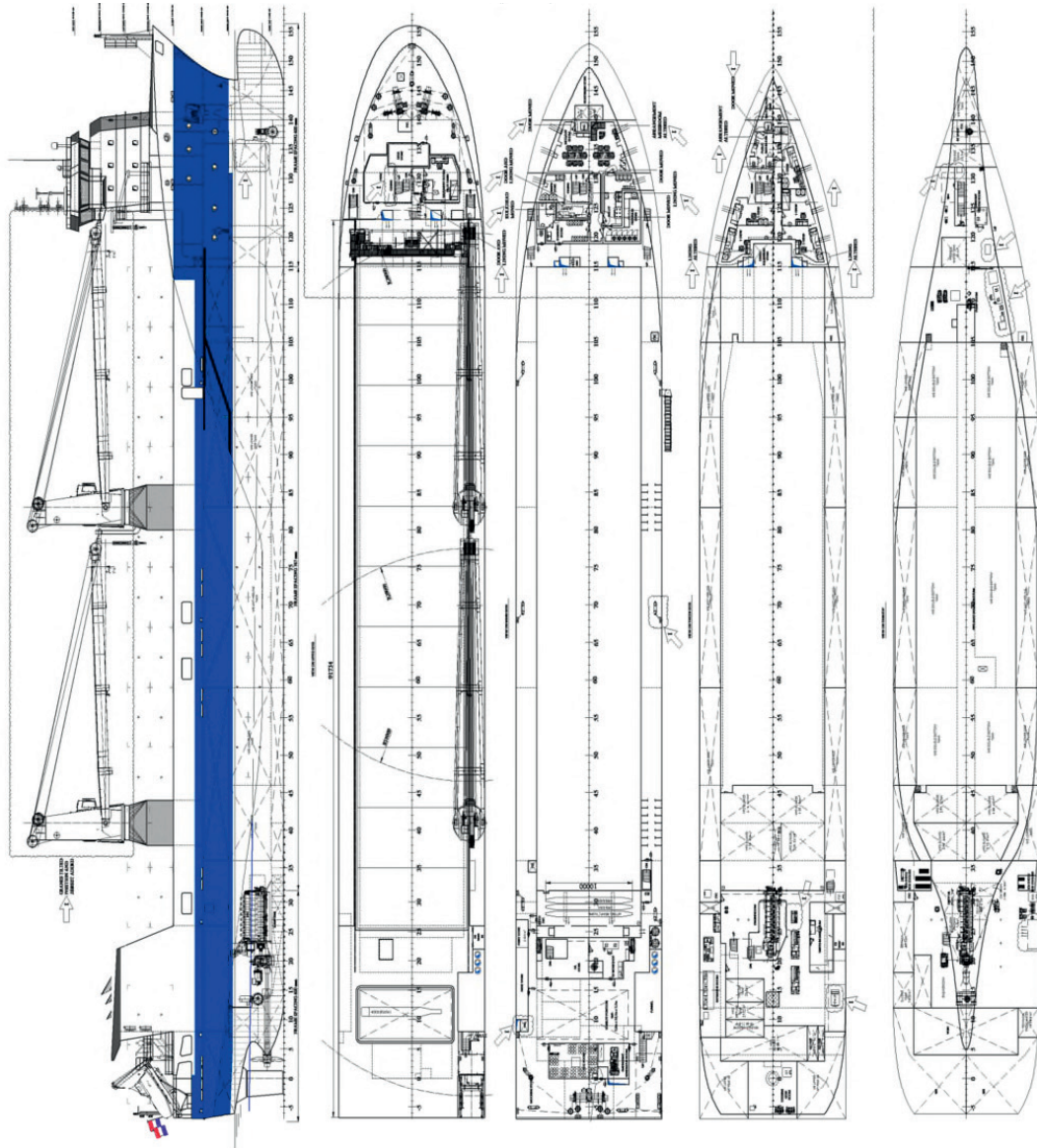
Certified for open hatch sailing



Our A300 Vessels

- MV Eemslift Dafne
- MV Eemslift Nadine
- MV Eemslift Nelli

MPP Tonnage A300



For more information visit dship-carriers.com

All details given in good faith but without guarantee. Not to be used with charterparties without written authority.