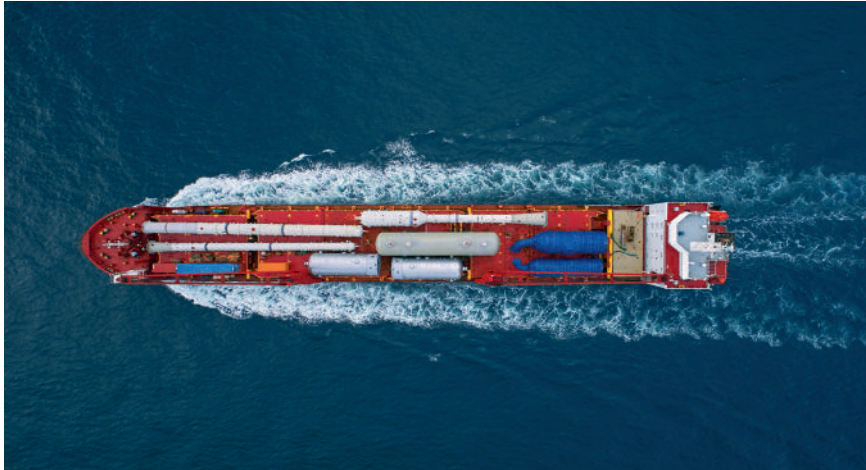


MPP Tonnage F300



Certified
according to key
industry standards



Financial Stability
thanks to solid
family enterprise



Crane Capacity
300 MT

General information

Flag/home port Liberia
Type multi purpose dry cargo ship
strengthened for heavy cargo
equipped for the carriage of containers
IMO Fitted for all classes

Classification

GL+100 A5 E3 G IW DBC SOLAS-II-2,
REG.19 G IW, +MC E3 AUT

Tonnage

DWAT 12,652 MT
GT/NT 9,611/4,260

Capacity (bale space)

Cubic meters 15,952 m³
Cubic feet 563,340 cbft

Dimensions

LOA 138.07 m
LPP 130.00 m
Beam 21.00 m
Depth 11.00 m
Draft 8.00 m

Engine

Main engine MAK 6M43,
MCR: 5,400 kW at 500 rpm
Aux. engine 3x 395kW/230 Volt at 50 Hz
Diesel generator 395 kW
Emerg. generator 99 kW
Shaft generator 700 kW
Bow thruster 500 kW

Tank capacity

Fuel IFO 871 m³
Fuel MDO 260 m³
Freshwater 128 m³
Ballast 5,004 m³

Hatches/holds

Hold 1 18.75 x 15.02 m aft to 10.06 m fwd
TD position (5.40 m)
2 hydraulic folding covers opening fwd
Hold 2 42.00 x 17.50 m
TD positions (3.25/6.00/7.40 m)
2 hydraulic folding covers opening fwd
4 hydraulic folding covers opening aft
(splittable hatchcovers)
Hold 3 25.50 x 17.50 m
TD position (5.59 m)
4 hydraulic multifolding covers opening aft

Gear

Crane type
2 NMF cranes of 150 MT SWL each, located
port side, combinable to 300 MT SWL
Outreach SWL
150 MT/16 m; 120 MT/19 m;
95 MT/24 m; 70 MT/33 m

Permissible loads

Tanktop 16 t/m²
Tweendeck hold 4 t/m²
Hatchcovers 1.75 t/m²

Containers

Total 665 TEU
On deck 331 TEU
Under deck 334 TEU
Basis 14 MT 334 TEU

Remarks

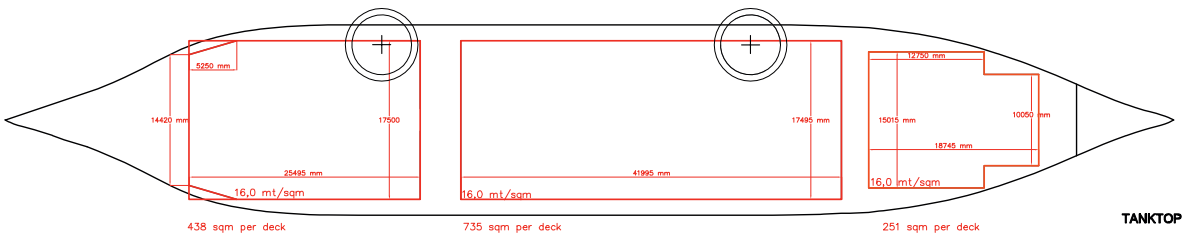
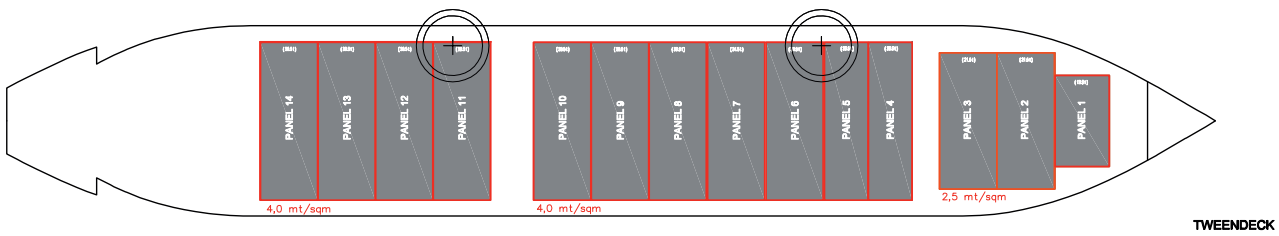
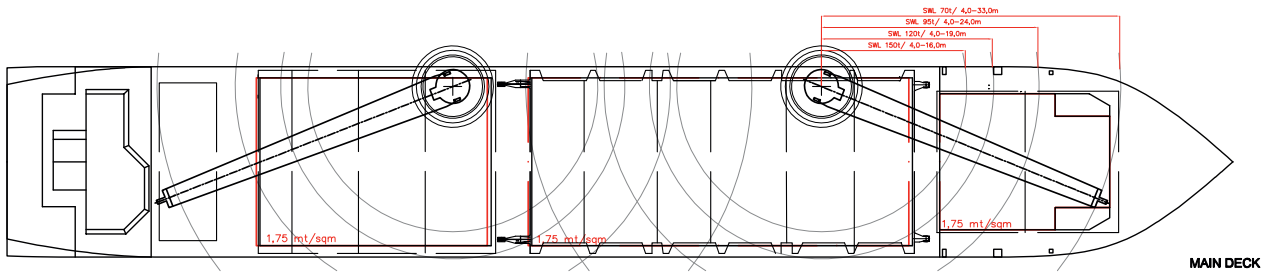
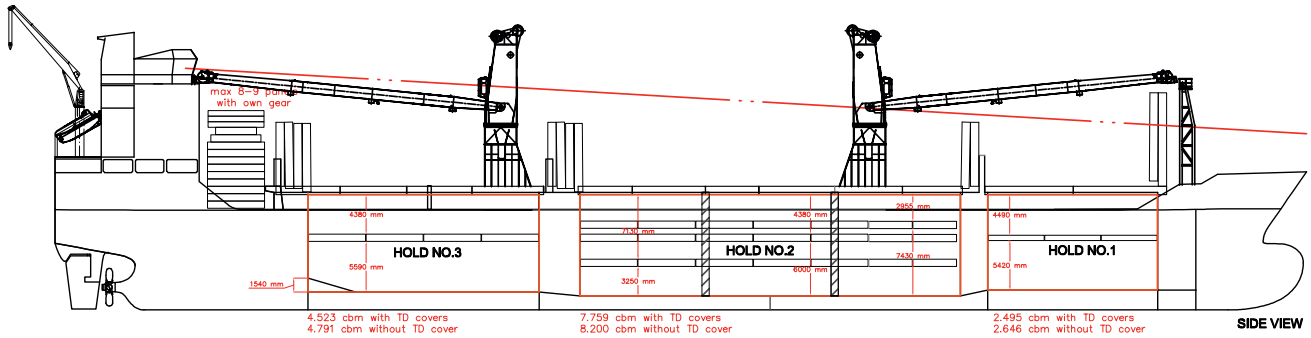
Great Lakes fitted, AMSA fitted,
all cargo holds CO2 fitted;
Hold 1: Sprinkler system
Hold 2 and 3: 12 air changes per hour



Our F300 Vessel

• *MV Debbie*

MPP Tonnage F300



For more information visit dship-carriers.com

All details given in good faith but without guarantee. Not to be used with charterparties without written authority.